



March Newsletter

Australian Plants Society

Wilson Park (Berwick) Inc.

Inc. A0028350T March, 2016 ABN 69 324 096 622

Website for Australian Plants Society Victoria is www.apsvic.org.au

Website for APS Wilson Park (Berwick) Inc. is:

www.apswilsonparkberwick.org.au

Blue Banded Bee

Blue banded bees are one of our most beautiful Australian native bees. They are about 11 mm long and have bands of metallic blue fur across their black abdomens.

Blue banded bees are solitary bees. This means that each female bee mates and then builds a solitary nest by herself. She builds her nest in a shallow burrow in clay soil or sometimes in mudbricks. Many blue banded bees may build their nest burrows in the same spot, close to one another, like neighbouring houses in a village.

Blue banded bees can perform a special type of pollination called 'buzz pollination'. Some flowers hide their pollen inside tiny capsules. A blue banded bee can grasp a flower like this and shiver her flight muscles, causing the pollen to shoot out of the capsule. She can then collect the pollen for her nest and carry it from flower to flower, pollinating the flowers. Quite a few of our native Australian flowers require buzz pollination eg Hibbertia, Senna.

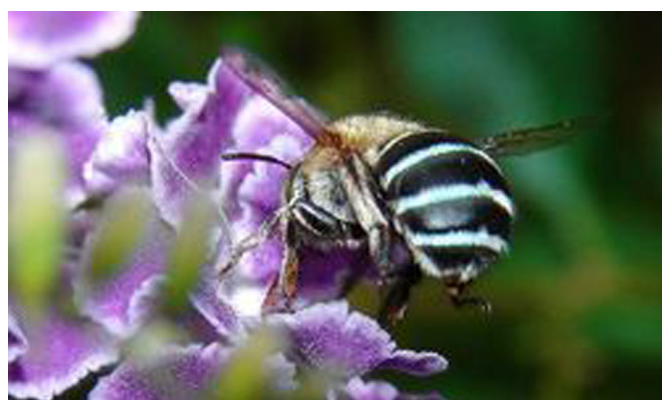
Tomato flowers are also pollinated better when visited by a buzz pollinating bee. Researchers at the University of Adelaide are developing native blue banded bees for greenhouse tomato pollination. It would be much better for our environment to use our native blue banded bees for this purpose rather than introducing European bumblebees to Australia!

A full list of the other information on blue banded bees can be found on the Aussie Bee website such as:

Where are blue banded bees found in Australia?

Blue banded bee nests and life cycle

Blue banded bee nests.



Burrendong Beauty

Burrendong Beauty is a little special because it appears to have come into existence by accident and is a hybrid variety of Hakea.

Genus: Hakea

Species: Hybrid of *H. myrtooides* and *H. petiolaris*

Common Name: 'Burrendong Beauty'

Flower Colour: Pink/red

Foliage Colour: Dark Green

Growth Habit: Shrub to 1.5m

Flowering: Winter

Burrendong Beauty is an extremely beautiful variety of Hakea. It is very similar to *Grevillea*'s flowers, the Burrendong Beauty has lots of little red ball like flowers with pink stamens. They flower very prolifically, so from about mid winter you can expect to see your Hakea Burrendong Beauty absolutely covered with these beautiful flowers.

Burrendong Beauty has been known to grow best in Temperate climates, though it can tolerate cooler climates as long as there is only minor front conditions. Sub tropical and tropical regions tend to be too humid for this variety to thrive in.

The best way to see this variety thrive is to plant it in a good, sunny position and make sure the soil it is planted in will drain well. In saying 'sunny position', really hot strong periods of weather will knock this variety around, so try and find a spot that has the morning sun and afternoon shade, given that afternoon sun is generally hotter than spots that get the morning sun.



Hyacinth Orchid

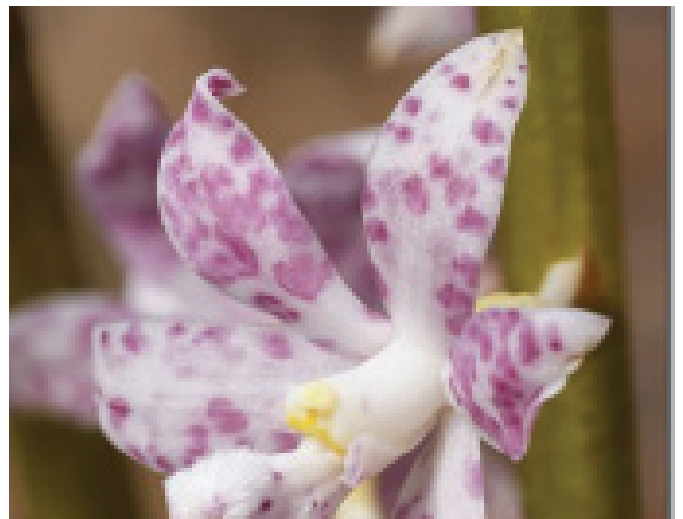
Hyacinth orchids, in particular the rare Spotted Hyacinth Orchid, *Dipodium pardalinum*. It was found flowering at Kilmore's Monument Hill. Found also in Hidden Valley.

The pink/purple hyacinth orchids can be tricky to distinguish but if the labellum (bottom petal/lip) is spotted rather than striped or solid colour then the chances are it is *Dipodium pardalinum*.

They flower over summer.

We have had them in the bush across the road from our house.

Joy (Ed.)



Sausage Sizzle at Bunnings



This photo was taken at the BBQ you conducted for Australian Plants Society Wilson Park Inc. Please accept this as a small memento of what we hope was a great day.

It was our pleasure to have been able to assist you and look forward to seeing you again. If there is anything else we are able to assist you please don't hesitate to contact me at the store on 8796 6600. Yours sincerely, Claire Lee, Complex Manager, Bunnings Fountain Gate 64 – 86 Narre Warren North Rd Narre Warren North 3804 03 8796 6600.

Doryanthes excelsa



Doryanthes excelsa is a clumping, tussock-like species consisting of long, lance-shaped leaves about 150 cm long by about 10 cm wide. The leaves are bright green in colour. The flowering stem emerges from the centre of the tussock during winter and may reach 3 to 5 metres in height when the flowers open in spring. The flowers occur in clusters at the top of the stem and, individually are about 100 mm long. The flowers are usually red but a rare white-flowered form is known. The flowers are bird-attracting. Gynea lily is a hardy and attractive plant that has received a lot of attention in public landscaping projects in recent years. Although native to the Sydney region, it has proven adaptable to a range of climates. The plant prefers well drained, moist soils in full sun or partial shade. The foliage is frost tolerant but the flowers may be damaged by heavy frost. Plants tend to be fairly slow growing but respond to applications of slow-release fertilisers. The development of flowering stems can take anything from 5 to 20 years from seed. Propagation is usually carried out from seed which does not require any pre-sowing treatment. Division of clumps is also possible.

*Thank you to Cardinya View Nursery
for bringing along a selection of tubestock for
members to purchase.*

Proposed Program for 2016

DATE:	TIME:	SPEAKER
TUESDAY, MARCH 8:	8.00pm	Greame Woods will be presenting a feature on Hakeas.
SUNDAY, APRIL 17:	2.00pm	Grafting afternoon at Sunvalley Nursery, Langwarrin. There may be a cost, will update on this when confirmed.
TUESDAY, MAY 10:	8.00pm	Vanessa, Bush Heritage on Gippsland properties.
TUESDAY, JUNE 14:	8.00pm	Jason Caruso will be giving a presentation on Eucalypts for small gardens.
TUESDAY, JULY 12:	8.00pm	Cindy Tomamichel will give a talk on Soils etc. plus an open discussion session.
TUESDAY, AUGUST 9:	8.00pm	Annual General Meeting.
TUESDAY, SEPTEMBER 3:	9.00am	ANNUAL SPRING PLANT SALE (TBC)
TUESDAY, SEPTEMBER 13:	8.00pm	A presenter to be sourced.
TUESDAY, OCTOBER 11:	8.00pm	A presenter to be sourced.
TUESDAY, NOVEMBER 8:	8.00pm	Rodger Elliott will be talking on how to create a habitat garden.
TUESDAY, DECEMBER 13:		Christmas breakup.

Australian Textile Exhibition

The fifth Australian Textile Exhibition will feature fabrics and designs by Leesa Chandler. There will be a display of Australian flora and fauna-inspired quilts from all over Australia and demonstrations by various quilting and textile experts.

Included will be a Chandlers Cottage pop-up shop, plus beautiful hand-made items by the Friends of the Royal Botanic Gardens Cranbourne.

WHEN: Saturday 5 March to Monday 14 March

TIME: 10am to 4pm.

WHERE: Gallery and Auditorium Cranbourne Botanic Gardens

COST: FREE

BOOKINGS / ENQUIRIES 03 5990 2200 for more information.

*Thank you to Facey's Wholesale Nursery
for their ongoing support in
donating plants towards our raffle*